



Beaumaris Secondary College

**Year 9 & 10 2024
Parent Payments**

Dear Parents/Guardians,

We are looking forward to a great year of teaching and learning at Beaumaris Secondary College and would like to advise you of the college's voluntary financial contributions for 2024.

Schools provide students with free instruction to fulfil the standard Victorian curriculum requirements and we want to assure you that all contributions are voluntary. Nevertheless, the ongoing support of our families ensures that our school can offer the best possible education and support for our students.

Beaumaris Secondary College and School Council make every effort to keep the cost of items and activities to a minimum and affordable for all parents, by reviewing costs on an annual basis.

The monumental financial support from our parents has allowed us to build/install/purchase:

- Equipment to run a wide range of specialism subjects and curriculum experiences
- A bank of enhanced digital learning devices
- Micro-credentials week activities
- Sewing machines with enhanced functionality
- Sewing masterclasses
- Photography equipment for Create
- Performance Lighting for the Theatre
- Theatre props
- Drills and power tools for Design Technology
- Digital Blood pressure monitors for BEST
- ECG sensor for BEST
- Telescope for stargazing
- Micro bits
- Music scores and equipment
- Drama blocks and scripts
- Service our aquarium in BEST allowing students to study the ecosystem in real time
- Build a sanctuary for our stick insects allowing students to study them in their natural environment as well as feed/care for them
- BEST machine sets demonstrating directional force and mechanical advantage
- Tug of war ropes to enhance the learning in Physics

For further information on the Department's Parent Payments Policy, please refer to the one-page document at the end of this booklet.

Yours sincerely,



Debby Chaves
Principal



Steve Pearce
School Council President

Curriculum Contributions – items and activities that students use, or participate in, to access the Curriculum		Amount
Year 9/10 subject consumables, classroom materials and activities	Amount	
Architecture – Inks, markers, cartridge paper, mountboard, drafting film/foam and presentation boards	\$55.00	
Art and Soul – Canvas, paper and card, markers, oil pastels, charcoal, clay, glazes, inks and Prismacolor pencils	\$60.00	
ART-iculate – Canvas, paper and card, markers, oil pastels, charcoal, clay, glazes, inks and etching paper	\$60.00	
Artisanship – Materials including timber, acrylic, argenteum silver solder, glue, resin, hinges, sandpaper, drill bits, silicone molding, oil, stain, varnish and lacquer etc	\$130.00	
Be a Film Maker – Storyboards and scripts	\$ 5.00	
Be a Vet – Dissection materials	\$20.00	
Be an Author – Printing and photocopying	\$NIL	
Changing the Status Quo – Printing and photocopying	\$NIL	
Children of the Revolution (History) – PBL resources	\$10.00	
Coding 1 – API access, learning tools and other software APIs	\$ 5.00	
Cooking with Chemistry – Cooking materials and equipment upkeep	\$70.00	
CSI: Crime Scene Investigation – Resource materials, playdough brain, blood sample kits and chromosome modelling	\$15.00	\$
Cultural Lens – Printing and photocopying	\$NIL	
Design and Culture – Markers, watercolor pencils, paper, mountboard and presentation board	\$30.00	
DNA to Dinosaurs – Resource materials, experiments and investigations	\$10.00	
Don't Stop the Music – Printing and photocopying	\$NIL	
Drama – Stimulus materials, production role workshop, PBL scripts and excerpts	\$45.00	
Driving the Future – Electronic components, batteries, motors etc	\$30.00	
Events that Change the World (History) – PBL resources	\$ 5.00	
Film as Text – Printing and photocopying	\$NIL	
Fit for Life – First aid kit, poster paper and art supplies for PBLs	\$ 5.00	
Game Set Match – Whistles, poster paper and art supplies for PBLs	\$ 3.00	
Games as Text – Printing and photocopying	\$NIL	
GOAL (Year 9/10) – Resource materials for termly based activities	\$ 8.00	
Good and Evil – Printing and photocopying	\$NIL	
Greatest Novels of all time – Printing and photocopying	\$NIL	
Green Chemistry – PBL chemicals and equipment	\$25.00	
Heritage to Hip Hop – Printing and photocopying	\$NIL	
Hopes and Horrors of Humanity – Printing and photocopying	\$NIL	

Horrible Histories (History) – Printing and photocopying	\$NIL	
Innovate (Year 9) – Resource materials	\$ 9.00	
Innovate (Year 10) – Printing and photocopying	\$NIL	
Introduction to Calculus – PBL resources, rechargeable batteries	\$ 5.00	
Introduction to Integral Calculus – Printing and photocopying	\$NIL	
Inventions and Discoveries – Timber, acrylic, 3D printing, filament, glue, gears, gearboxes, shafts, wheels, controllers, motors, senses etc	\$130.00	
Language French (Year 9) – PBL materials	\$18.00	
Language French (Year 10) – PBL materials	\$ 5.00	
Language Japanese (Year 9) – Japanese cooking, PBL materials	\$15.00	
Language Japanese (Year 10) – Japanese cooking, PBL materials	\$11.00	
Life Through the Lens – Camera and equipment upkeep	\$10.00	
Marine Sanctuary – Resource materials, experiments and activities	\$ 5.00	
Mathematics (Year 9) – Resource materials	\$ 2.00	
Mathematics (Year 10) – Resource materials	\$ 2.00	
Maths Pathways – Resource materials and baking activity	\$10.00	
Money and Markets (Economics) – Resource materials	\$ 5.00	
Music Studio – Soundtrap license, instrument hire and songbooks	\$40.00	
Novel into Film – Printing and photocopying	\$NIL	
Poverty and Power (Geography) – Resource materials	\$ 5.00	
Snapshot – Camera and equipment upkeep	\$10.00	
Sport Enhancement (Year 9/10) – <i>Pay as you go, \$250 per term</i>	\$NIL	
Survival Skills – Sandpaper, rope, flint, glassware, potassium, glycerol, iron, wool and batteries	\$15.00	
Sustainable Development – Resource materials	\$ 5.00	
Sustainable Food Solutions – Cooking materials and equipment upkeep	\$200.00	
The Big Bang – Hot glue, rubber bands, string, foil, paper and tape	\$20.00	
The Body Lab – Printing and photocopying	\$NIL	
The Great Outdoors – Printing and photocopying	\$NIL	
The heART of It – Canvas, paper and card, markers, oil pastels, charcoal, clay, glazes, inks and etching paper	\$60.00	
You Are What You Eat – Cooking materials and equipment upkeep	\$250.00	
VSL Studies		\$160.00
<ul style="list-style-type: none"> Enrolment Contribution to the Victorian School of Languages 		
Student Resources		\$5.00
<ul style="list-style-type: none"> Year 9/10 Student ID Card 		
Digital Technologies – provision of devices, software, and system support		\$130.00
<ul style="list-style-type: none"> Compass Access (\$40), Library Systems (\$5), IT Security & Support (\$85) 		
Year 9/10 printing and photocopying of worksheets and learning materials		\$70.00

Total Curriculum Contributions based on Specialism choices	\$
---	-----------

Other Contributions – for non-curriculum items and activities	Amount
Curriculum Innovate	\$200.00
First Aid Equipment	\$10.00
State Schools' Relief	\$50.00
Total Other Contributions	\$260.00

Tax deductible contributions (suggested amount) <i>Suggested amount parents to complete in Compass portal</i>	Amount
Building Fund. A tax-deductible contribution to support renovations, upgrades and maintenance of school infrastructure.	\$50.00
Library Fund. A tax-deductible contribution to support book purchases and other equipment that sustain the library as a valuable resource.	\$50.00
Total Tax-deductible Contributions	\$100.00
Total Curriculum and Other Contributions	\$

Education items for students to own

Booklists: Families will receive a separate booklist of items that the school recommends you purchase from Beaumaris Books for your child to individually own and use.

BYOD: Beaumaris Secondary College is a BYOD school. Students are requested to purchase a device that meets the criteria listed on the College website.

Extra-Curricular Items and Activities – provided on a user-pays basis

Beaumaris Secondary College offers a range of optional items and activities that enhance or broaden the schooling experience of students and are above and beyond what the school provides to deliver the curriculum.

The cost of extra-curricular items and activities will be advised throughout the year.

Indicative Extra-Curricular Items and Activities	Indicative Amount
Athletics Carnival	\$30.00
Swimming Carnival	\$30.00
Architecture – Excursion	\$40.00
Art and Soul – Excursion	\$60.00
ART-iculate – Excursion	\$60.00
Be a Vet – Myuna Farm Excursion	\$80.00
Be a Vet – Melbourne Zoo Excursion	\$80.00

Be an Author – Incursion	\$30.00
CSI: Crime Scene Investigation – Incursion	\$25.00
Cultural Lens – Immigration Museum Excursion	\$40.00
DNA to Dinosaurs – Bioeyes Incursion	\$20.00
DNA to Dinosaurs – Fossils of Bayside Incursion	\$30.00
DNA to Dinosaurs – Melbourne Museum Excursion	\$30.00
Drama – Live Theatre Performance	\$70.00
Driving the Future – Road Start Incursion	\$30.00
Events that Change the World – Shrine of Remembrance Excursion	\$26.00
Fit for Life – Cable Park Excursion	\$60.00
Fit for Life – High Ropes Course Excursion	\$60.00
Game, Set, Match – Tennis, Bowling, Hockey Excursions	\$50.00
GOAL (Year 9/10) – Wellbeing Days	\$60.00
Hopes and Horrors of Humanity – Holocaust Museum Excursion	\$40.00
Horrible Histories – Holocaust Museum Excursion	\$40.00
Language French (Year 9) – French Bakery Excursion	\$45.00
Language French (Year 10) – French Film Festival Excursion	\$45.00
Language Japanese (Year 9 & 10) – City Excursion	\$35.00
Life Through the Lens – Cranbourne Botanical Gardens Excursion	\$55.00
Marine Sanctuary – Ricketts Point Snorkelling Excursion	\$170.00
Marine Sanctuary – Portsea Excursion	\$170.00
Marine Sanctuary – Ricketts Point Excursion	\$50.00
Music Studio – Music Concert Excursion	\$30.00
Poverty and Power – Incursion	\$10.00
Snapshot – City Excursions x2	\$120.00
Survival Skills – Bushcraft Survival Australia 3 Day Camp	\$500.00
The Big Bang – Australian Synchrotron Excursion	\$50.00
The Body Lab – Gym Excursion	\$25.00
The Great Outdoors – Camps x2	\$600.00
Sport Enhancement (Year 9/10) – Coaching/BASE training sessions run by external provider – compulsorily payment approx. \$250.00 per term	\$1000.00

Total Extra-curricular Items and Activities totals are based on Specialism choices

Instrumental Music Program

Instrumental Music Program – Refer to website for Instrumental Music Handbook	\$Price on enquiry
--	--------------------

Category	Total Amount
Curriculum Contributions based on Specialism choices	\$
Other Contributions	\$260.00
Tax-deductible Contributions	\$100.00
Total	\$
Pay as you go – Extra-curricular Items and Activities <i>To be paid via Compass throughout the year</i>	

Payment Options

Payment options available commencing **5 February 2024**:

- In full
- 5 monthly instalments
- 10 fortnightly instalments

The college will be utilising the Compass Billing module for payments, instructions can be found on the following pages.

If you do not wish to use Compass, please contact the office on 03 8569 9200 to discuss alternative payment options.

Financial Support for Families

Beaumaris Secondary College understands that some families may experience financial difficulty and offers a range of support options, including:

- The Camps, Sports and Excursions Fund (CSEF)
- State Schools' Relief (SSR)
- Payment plans for extra-curricular items and activities

For a confidential discussion about accessing these services, or if you would like to discuss alternative payment arrangements, contact:

Justine MacDonald, Business Manager

Ph: 03 8569 9200 | Email: justine.macdonald@education.vic.gov.au



School Fees & Contributions Parent Guide

A step by step guide to take you through paying your school contributions through the Compass Portal.



Web Browser

Click the 'Payment Centre' Banner from your Home Page to access your Contributions.

Welcome back, Terri!
Magic P-12 College

Payments Centre
Did you know that payments can be made through Compass for school fees, events, and voluntary contributions?
[Click here for more information](#)

Mastercard | VISA | No surcharge

Parent Student Teacher Conference
2020 Term 3
[Click here for booking](#)

Attendance: Attendance Note Required
Phoebe was recorded as 'not present' or 'late' without explanation.
[Click here for more information](#)

My News

Liz Larson
Jan 17th

Book Week
During this time schools and public libraries spend one glorious week celebrating books and Australian children's authors and illustrators. Classroom teachers, teacher librarians

Phoebe ARNOLD
Profile (Attendance, Schedule)
Send email to Phoebe's teachers
Add Attendance Note (Approved Absence/Late)
Book Parent Student Teacher Conference

Jimmy ARNOLD
Profile (Attendance, Schedule)
Send email to Jimmy's teachers
Add Attendance Note (Approved Absence/Late)
Book Parent Student Teacher Conference

Contributions

Account: Phoebe ARNOLD, James ARNOLD

2022 School Contributions Action Required \$450.00 >

View more information regarding your historical payments and existing Recurring Contributions

Compass App

Select Payments Centre from your Home Page.

2:12 4G

Home

Select your child to view their profile

Jimmy Phoebe

Payments Centre
Did you know that payments can be made through Compass for school fees, events, and voluntary contributions? [Click here for more information](#)

Latest news
View all Saved

Sorted by most important

Liz Larson
27/08/2021

Book Week
During this time schools and public libraries spend one glorious week celebrating books and Australian children's authors and illustrators. Classroom teachers, teacher librarians and public librarians
Continue Reading

Contributions
Account: Phoebe ARNOLD, James ARNOLD

2022 School Contributions Action Required \$450.00 >

View more information regarding your historical payments and existing Recurring Contributions

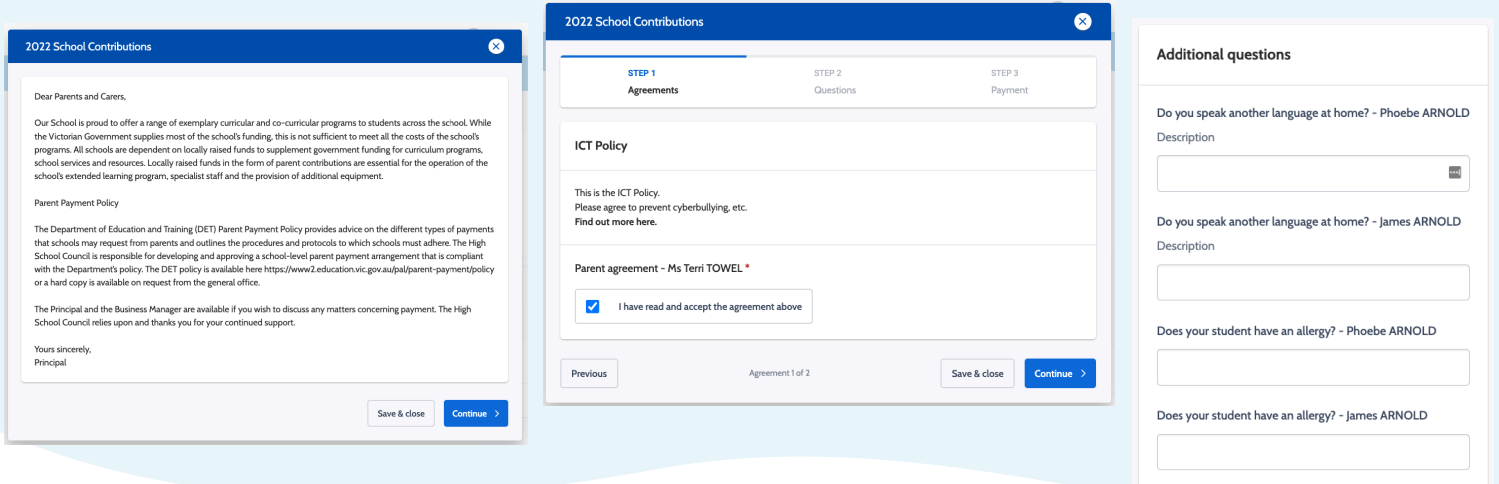
Home Calendar



1. Description, Agreements & Questions

The first thing you'll see is your school's customised description, detailing information about contributions.

Clicking through, you may be prompted to fill out any Agreements & Questions that are relevant to your student and their enrolment.



2022 School Contributions

Dear Parents and Carers,

Our School is proud to offer a range of exemplary curricular and co-curricular programs to students across the school. While the Victorian Government supplies most of the schools funding, this is not sufficient to meet all the costs of the schools programs. All schools are dependent on locally raised funds to supplement government funding for curriculum programs, school services and resources. Locally raised funds in the form of parent contributions are essential for the operation of the school's extended learning program, specialist staff and the provision of additional equipment.

Parent Payment Policy

The Department of Education and Training (DET) Parent Payment Policy provides advice on the different types of payments that schools may request from parents and outlines the procedures and protocols to which schools must adhere. The High School Council is responsible for developing and approving a school-level parent payment arrangement that is compliant with the Department's policy. The DET policy is available here <https://www2.education.vic.gov.au/pal/parent-payment/policy> or a hard copy is available on request from the general office.

The Principal and the Business Manager are available if you wish to discuss any matters concerning payment. The High School Council relies upon and thanks you for your continued support.

Yours sincerely,
Principal

2022 School Contributions

STEP 1 Agreements STEP 2 Questions STEP 3 Payment

ICT Policy

This is the ICT Policy. Please agree to prevent cyberbullying, etc. [Find out more here.](#)

Parent agreement - Ms Terri TOWEL *

I have read and accept the agreement above

Previous Agreement 1 of 2 Save & close Continue >

Additional questions

Do you speak another language at home? - Phoebe ARNOLD
Description

Do you speak another language at home? - James ARNOLD
Description

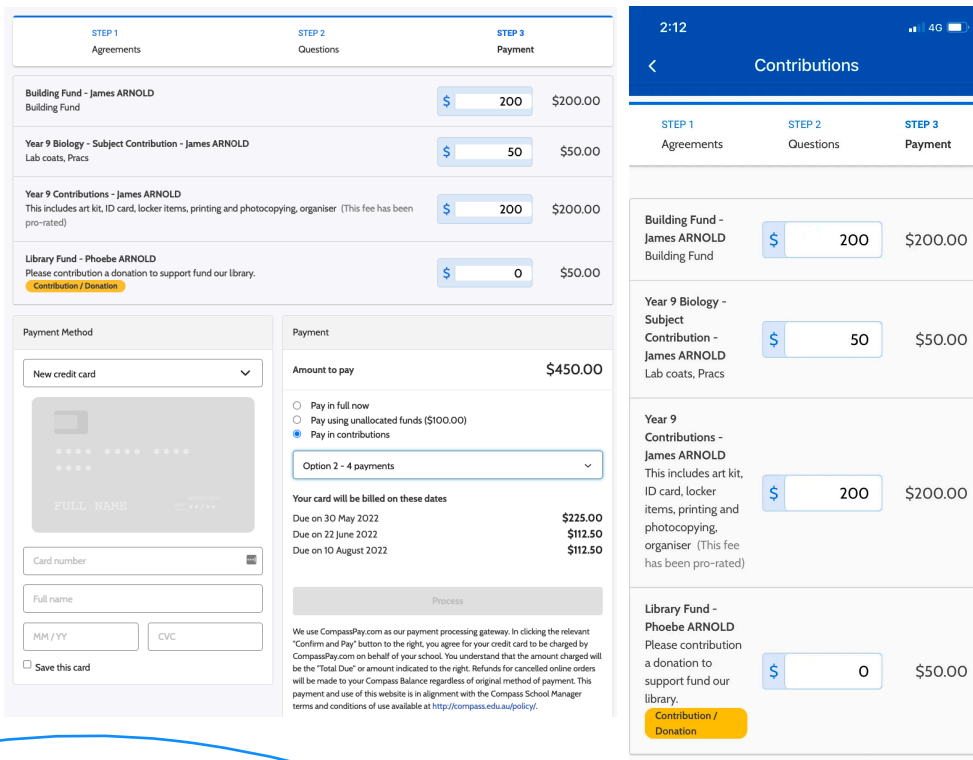
Does your student have an allergy? - Phoebe ARNOLD

Does your student have an allergy? - James ARNOLD

2. Paying your Contributions

Next, you'll see the contributions your school has posted against your student/s.

From here, you may have a few different items to choose from, broken down by student and fee type. As each item is voluntary, you can choose the amount you'd like to pay today. Next time you access your Contributions, the amounts available to pay will have decreased.



STEP 1 Agreements STEP 2 Questions STEP 3 Payment

Item	Amount	Total
Building Fund - James ARNOLD Building Fund	\$ 200	\$200.00
Year 9 Biology - Subject Contribution - James ARNOLD Lab coats, Pracs	\$ 50	\$50.00
Year 9 Contributions - James ARNOLD This includes art kit, ID card, locker items, printing and photocopying, organiser (This fee has been pro-rated)	\$ 200	\$200.00
Library Fund - Phoebe ARNOLD Please contribution a donation to support fund our library. Contribution / Donation	\$ 0	\$50.00

Payment Method

New credit card

Payment

Amount to pay **\$450.00**

Pay in full now
 Pay using unallocated funds (\$100.00)
 Pay in contributions

Option 2 - 4 payments

Your card will be billed on these dates

Due on 30 May 2022	\$225.00
Due on 22 June 2022	\$112.50
Due on 10 August 2022	\$112.50

Process

We use CompassPay.com as our payment processing gateway. In clicking the relevant "Confirm and Pay" button to the right, you agree for your credit card to be charged by CompassPay.com on behalf of your school. You understand that the amount charged will be the "Total Due" or amount indicated to the right. Refunds for cancelled online orders will be made to your Compass Balance regardless of original method of payment. This payment and use of this website is in alignment with the Compass School Manager terms and conditions of use available at <http://compass.edu.au/policy/>.

Contributions

STEP 1 Agreements STEP 2 Questions STEP 3 Payment

Building Fund - James ARNOLD Building Fund	\$ 200	\$200.00
Year 9 Biology - Subject Contribution - James ARNOLD Lab coats, Pracs	\$ 50	\$50.00
Year 9 Contributions - James ARNOLD This includes art kit, ID card, locker items, printing and photocopying, organiser (This fee has been pro-rated)	\$ 200	\$200.00
Library Fund - Phoebe ARNOLD Please contribution a donation to support fund our library. Contribution / Donation	\$ 0	\$50.00

Payment Options

1. Credit Card/Saved Card

Just like an Event, pay the chosen amount in one go.

2. Payment Plan

Choose from your school's preset options to setup a direct debit.

3. Credits/Unallocated Funds

If you see this option, your school has applied a credit against your account.

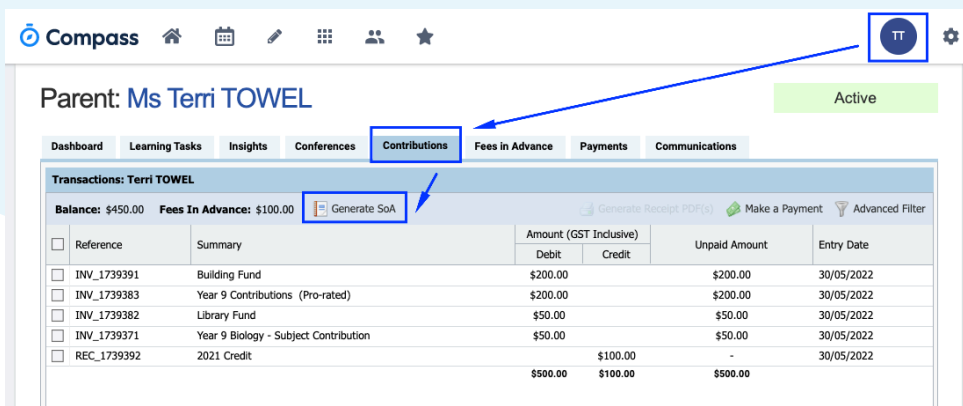
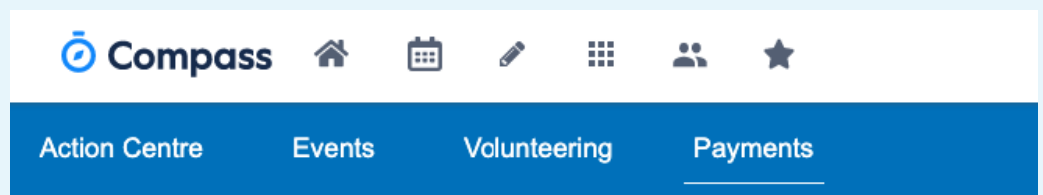
The amount you're choosing to pay here will need to equal the credit amount.

3. Accessing your Payment History

Each time you make a payment through Compass, you'll receive a receipt straight to your email address.

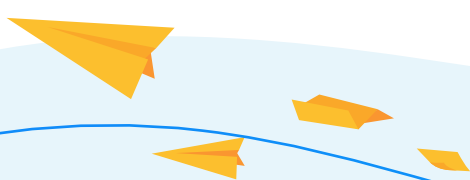
Within the portal, you can also access your **Payment History** through **Payments Centre**.

To generate a **Statement of Account PDF**, simply navigate to your parent account via your initials in the top right, and select the **Contributions** tab. From here, generate your SoA.



Handy Tips & Tricks

- ✓ **Chip away at your Contributions as you please!**
 You can access your Compass App at anytime to see what's been paid, and choose to pay more if required.
- ✓ **Keep all your Events and Contributions in one spot.**
 No need to jump between multiple programs and paper forms - it's all in Compass!
- ✓ **Manage your own Payment History in-app, without having to call up the Admin Office!**
 Automated emails and downloadable statements make it even easier to know what's been paid.



REFUND POLICY

Parent requests for refunds are subject to the discretion of the school and made on a case-by-case basis.

Refunds will be provided where the school deems it is reasonable and fair to do so, taking into consideration whether a cost has been incurred. This applies in all circumstances including illness with a medical certificate.

Any refund requests must be made in writing.

Advice regarding refunds will be provided once all suppliers have been paid and reconciliations have been completed. Please note that this could take approximately 30 days.

Approval and review

Beaumaris Secondary College Council has approved this policy and will review the policy in line with any future changes to Government policy and Beaumaris College objectives annually.

REVIEW CYCLE

This policy was last approved by school council in February 2023 and is scheduled for review in February 2024

PARENT PAYMENTS POLICY

ONE PAGE OVERVIEW



FREE INSTRUCTION

- Schools provide students with free instruction and ensure students have free access to all items, activities and services that are used by the school to fulfil the requirements of the Curriculum. This includes the Victorian Curriculum F-10, the Victorian Certificate of Education (VCE) including the VCE Vocational Major and the Victorian Pathways Certificate.
- Schools may invite parents to make a financial contribution to support the school.



PARENT PAYMENT REQUESTS

Schools can request contributions from parents under three categories:

Curriculum Contributions

Voluntary financial contributions for curriculum items and activities which the school deems necessary for students to learn the Curriculum.

Other Contributions

Voluntary financial contributions for non-curriculum items and activities that relate to the school's functions and objectives.

Extra-Curricular Items and Activities

Items and activities that enhance or broaden the schooling experience of students and are above and beyond what the school provides for free to deliver the Curriculum. These are provided on a user-pays basis.

- Schools may also invite parents to supply or purchase educational items to use and own (e.g. textbooks, stationery, digital devices).



FINANCIAL HELP FOR FAMILIES

- Schools put in place financial hardship arrangements to support families who cannot pay for items or activities so that their child doesn't miss out.
- Schools have a nominated parent payment contact person(s) that parents can have a confidential discussion with regarding financial hardship arrangements.



SCHOOL PROCESSES

- Schools must obtain school council approval for their parent payment arrangements and publish all requests and communications for each year level on their school website for transparency.

Belong • Believe • Become



117/136 Reserve Road, Beaumaris VIC 3193

 03 8569 9200

 beaumaris.sc@education.vic.gov.au

 www.beaumarissc.vic.edu.au