



Beaumaris Secondary College

**VCE 2025
Parent Payments**

Dear Parents/Guardians,

We are looking forward to a great year of teaching and learning at Beaumaris Secondary College and would like to advise you of the college's voluntary financial contributions for 2025.

Schools provide students with free instruction to fulfil the standard Victorian curriculum requirements and we want to assure you that all contributions are voluntary. Nevertheless, the ongoing support of our families ensures that our school can offer the best possible education and support for our students.

Beaumaris Secondary College and School Council make every effort to keep the cost of items and activities to a minimum and affordable for all parents, by reviewing costs on an annual basis.

The monumental financial support from our parents has allowed us to build/install/purchase:

- Equipment to run a wide range of specialism subjects and curriculum experiences
- Micro-credentials week activities
- Curtains and lighting bar installation for Theatre Studies
- Geography weather metres for Environmental Studies
- Photography equipment for Create
- Sustainable food composter for Food Technology
- Digital Blood pressure monitors for BEST
- ECG sensor for BEST
- Class Set of Gel Electrophoresis Machines for BEST
- Student Leaders Conference to develop leadership skills
- Music scores and equipment
- Year 11 Big Day Out to promote year level connections
- Service our aquarium in BEST allowing students to study the ecosystem in real time
- Build a sanctuary for our stick insects allowing students to study them in their natural environment as well as feed/care for them
- BEST machine sets demonstrating directional force and mechanical advantage
- Portable PA system for school concerts and soirees

For further information on the Department's Parent Payments Policy, please refer to the one-page document at the end of this booklet.

Yours sincerely,



Debby Chaves
Principal



Steve Pearce
School Council President

Curriculum Contributions – items and activities that students use, or participate in, to access the Curriculum		Amount
Unit 1&2 VCE subject consumables, classroom materials and activities	Amount	
Applied Computing Unit 1&2 – App purchase and materials	\$20.00	
Art Making and Exhibiting Unit 1&2 – Canvas, markers, oil pastels, charcoals, inks, paper and card	\$100.00	
Beyond (Year 11) – Printing and photocopying	\$NIL	
Biology Unit 1&2 – SAC and practical resources	\$55.00	
Business Management Unit 1&2 – Printing and photocopying	\$NIL	
Chemistry Unit 1&2 – SAC and practical resources	\$60.00	
Economics Unit 1&2 – SAC and practical resources	\$25.00	
English Language Unit 1&2 – Resource materials	\$10.00	
English Literature Unit 1&2 – Study guide materials	\$10.00	
English Unit 1&2 – Printing and photocopying	\$NIL	
Food Studies Unit 1&2 – Food materials and equipment upkeep	\$345.00	
Foundation Maths Unit 1&2 – SAC and revision materials	\$10.00	
General Maths Unit 1&2 – SAC and revision materials	\$20.00	
Mathematical Methods Unit 1&2 – SAC and revision materials	\$20.00	
Specialist Maths Unit 1&2 – SAC and revision materials	\$20.00	\$
Geography Unit 1&2 – SAC and practical resources	\$15.00	
GOAL (Year 11) – Resource materials for termly based activities	\$ 8.00	
Health and Human Development Unit 1&2 – SAC and practical resources	\$35.00	
History – Modern Unit 1&2 – SAC and practical resources	\$10.00	
Languages French Unit 1&2 – SAC and revision materials	\$10.00	
Languages Japanese Unit 1&2 – SAC and revision materials	\$10.00	
Legal Studies Unit 1&2 – SAC and revision materials	\$15.00	
Physical Education Unit 1&2 – Resource materials and equipment upkeep	\$20.00	
Physics Unit 1&2 – SAC and practical resources	\$45.00	
Psychology Unit 1&2 – SAC resources; dissection, brain and neuron modelling	\$25.00	
Systems Engineering Unit 1&2 – Acrylic, 3D print filament, timber, metal, welding, soldering and electronic component consumables	\$130.00	
Visual Communication Design Unit 1&2 – Markers, watercolor pencils, brushes, mixed media, paper, card and foam	\$80.00	

Unit 3&4 VCE subject consumables, classroom materials and activities	
Applied Computing Unit 3&4 – App purchases and materials	\$20.00
Art Making and Exhibiting Unit 3&4 – Canvas, markers, oil pastels, charcoals, inks paper and card	\$130.00
Beyond (Year 12) – Printing and photocopying	\$NIL
Biology Unit 3&4 – SAC and practical resources	\$90.00
Business Management Unit 3&4 – SAC and revision materials	\$20.00
Chemistry Unit 3&4 – SAC and practical resources	\$80.00
Economics Unit 3&4 – SAC and practical resources	\$25.00
English Language Unit 3&4 – Resource materials	\$25.00
English Literature Unit 3&4 – Practice exams and revision lecture materials	\$25.00
English Unit 3&4 – SAC and research materials	\$25.00
Food Studies Unit 3&4 – Food materials and equipment upkeep	\$320.00
Foundation Maths Unit 3&4 – SAC and revision materials	\$20.00
General Maths Unit 3&4 – SAC and revision materials	\$20.00
Mathematical Methods Unit 3&4 – SAC and revision materials	\$20.00
Specialist Maths Unit 3&4 – SAC and revision materials	\$20.00
Geography Unit 3&4 – SAC and practical materials	\$20.00
GOAL (Year 12) – Resource materials for termly based activities	\$ 8.00
Health and Human Development Unit 3&4 – SAC and practical resources	\$25.00
History – Revolutions Unit 3&4 – Practice exams	\$25.00
Languages French Unit 3&4 – SAC and revision materials	\$15.00
Languages Japanese Unit 3&4 – SAC and revision materials	\$15.00
Legal Studies Unit 3&4 – SAC and revision materials	\$15.00
Media Unit 3&4 – SAC and practical resources	\$35.00
Philosophy Unit 3&4 – SAC and practical resources	\$15.00
Physical Education Unit 3&4 – Resource materials and equipment upkeep	\$20.00
Physics Unit 3&4 – SAC and practical resources	\$60.00
Psychology Unit 3&4 – SAC resources; dissection, brain and neuron modelling	\$60.00
Theatre Studies Unit 3&4 – VCAA monologue list, playscripts, set design, costume props, make-up and sound engineering	\$135.00
Visual Communication Design Unit 3&4 – Markers, watercolor pencils, brushes, mixed media, paper, card and foam	\$100.00

<u>VCE Vocational Major subject consumables, classroom materials and activities</u>		
Literacy VM Unit 1&2 – SAC, booklets and revision materials	\$30.00	
Literacy VM Unit 3&4 – SAC, booklets and revision materials	\$30.00	
Numeracy VM Unit 1&2 – SAC, booklets and revision materials	\$20.00	
Numeracy VM Unit 3&4 – SAC, booklets and revision materials	\$20.00	
Personal Development Skill VM Unit 1&2 – SAC and revision materials	\$20.00	
Work Related Skills VM Unit 1&2 – SAC and revision materials	\$20.00	
Work Related Skills VM Unit 3&4 – SAC and revision materials	\$30.00	
Student Resources		\$15.00
<ul style="list-style-type: none"> VCE Student ID Card (\$5) and Locker Maintenance (\$10) 		
Digital Technologies – provision of devices, software and system support		\$135.00
<ul style="list-style-type: none"> Compass Access (\$40), Library Systems (\$5), IT Security & Support (\$90) 		
VCE printing and photocopying of worksheets and learning materials		\$85.00
Total Curriculum Contributions based on Specialism choices		\$

Other Contributions – for non-curriculum items and activities	Amount
Curriculum Innovate	\$200.00
First Aid Equipment	\$10.00
State Schools' Relief	\$50.00
Total Other Contributions	\$260.00

Tax deductible contributions (suggested amount) <i>Suggested amount parents to complete in Compass portal</i>	Amount
Building Fund. A tax-deductible contribution to support renovations, upgrades and maintenance of school infrastructure.	\$50.00
Library Fund. A tax-deductible contribution to support book purchases and other equipment that sustain the library as a valuable resource.	\$50.00
Total Tax-deductible Contributions	\$100.00
Total Curriculum and Other Contributions	\$

Education items for students to own

Booklists: Families will receive a separate booklist of items that the school recommends you purchase from Beaumaris Books or the Sustainable School Shop for your child to individually own and use.

<https://beaumarissc.vic.edu.au/enrolments-tours/booklists-stationery>

BYOD: Beaumaris Secondary College is a BYOD school. Students are requested to purchase a device that meets the criteria listed on the BSC website.

<https://beaumarissc.vic.edu.au/enrolments-tours/byod-program>

Extra-Curricular Items and Activities – provided on a user-pays basis

Beaumaris Secondary College offers a range of optional items and activities that enhance or broaden the schooling experience of students and are above and beyond what the school provides to deliver the curriculum.

The cost of extra-curricular items and activities will be advised throughout the year.

Indicative Extra-Curricular Items and Activities	Indicative Amount
Athletics Carnival	\$20.00
Swimming Carnival	\$20.00
2025 Year 12 Camp	\$440.00
Art Making and Exhibiting Unit 1&2 – Excursion	\$60.00
Art Making and Exhibiting Unit 3&4 – Excursion	\$100.00
Biology Unit 1&2 – Zoo Excursion	\$35.00
Biology Unit 3&4 – GTAC Excursion	\$30.00
Business Management Unit 3&4 – Flour House Excursion	\$25.00
Chemistry Unit 1&2 – Melbourne Uni ‘What’s in Water’ Excursion	\$35.00
Chemistry Unit 3&4 – Melbourne Uni ‘Organic Analysis’ Excursion	\$60.00
English Literature Unit 3&4 – Author Talks Incursion	\$30.00
Geography Unit 1&2 – Overnight Camp	\$250.00
Geography Unit 1&2/3&4 – Fieldwork Excursion	\$30.00
GOAL (Year 11/12) – Wellbeing Days	\$60.00
History – Modern Unit 1&2 – Holocaust Museum Excursion	\$36.00
Languages French Unit 1&2 – Melbourne Museum	\$45.00
Languages French Unit 3&4 – Alliance Francaise de Melbourne	\$35.00
Languages Japanese Unit 1&2 – City Excursion	\$50.00
Literacy VM Unit 1&2/3&4 – Excursion	\$50.00
Media Unit 3&4 – City Excursion	\$60.00

Numeracy VM Unit 1&2/3&4 – Guest Presenter Incursion	\$50.00
Personal Development Skills VM Unit 1&2 – Homelessness Excursion	\$40.00
Philosophy Unit 3&4 – Museum Excursion	\$40.00
Physics Unit 3&4 – Luna Park Excursion	\$50.00
Psychology Unit 1&2 – National Gallery Victoria Excursion	\$50.00
Psychology Unit 3&4 – Incursion	\$20.00
Theatre Studies Unit 3&4 – Live Theatre Performances x5	\$250.00
Visual Communication Design Unit 1&2/3&4 – Excursion	\$40.00
Work Related Skills VM Unit 1&2/3&4 – Business Excursion	\$50.00

Total Extra-curricular Items and Activities totals are based on Specialism choices

Instrumental Music Program & VSL Studies

Instrumental Music Program – Refer to website for Instrumental Music Handbook	\$Price on enquiry
VSL Studies – Enrolment Contribution to the Victorian School of Languages	\$TBA

Category	Total Amount
Curriculum Contributions based on Specialism choices	\$
Other Contributions	\$260.00
Tax-deductible Contributions	\$100.00
Total	\$

Pay as you go – Extra-curricular Items and Activities
To be paid via Compass throughout the year

Payment Options

Payment options available commencing **3 February 2025**:

- In full
- 5 monthly instalments
- 10 fortnightly instalments

The college will be utilising the Compass Billing module for payments, instructions can be found on the following pages.

If you do not wish to use Compass, please contact the office on 03 8569 9200 to discuss alternative payment options.

Financial Support for Families

Beaumaris Secondary College understands that some families may experience financial difficulty and offers a range of support options, including:

- The Camps, Sports and Excursions Fund (CSEF)
- State Schools' Relief (SSR)
- Payment plans for extra-curricular items and activities

For a confidential discussion about accessing these services, or if you would like to discuss alternative payment arrangements, contact:

Justine MacDonald, Business Manager

Ph: 03 8569 9200 | Email: justine.macdonald@education.vic.gov.au



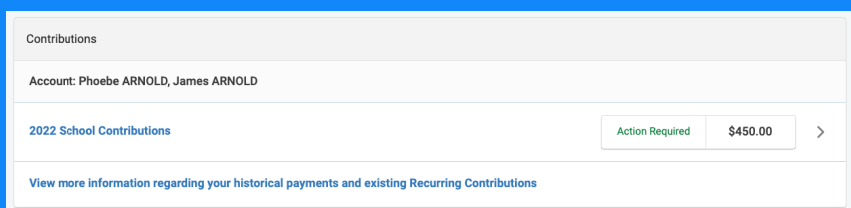
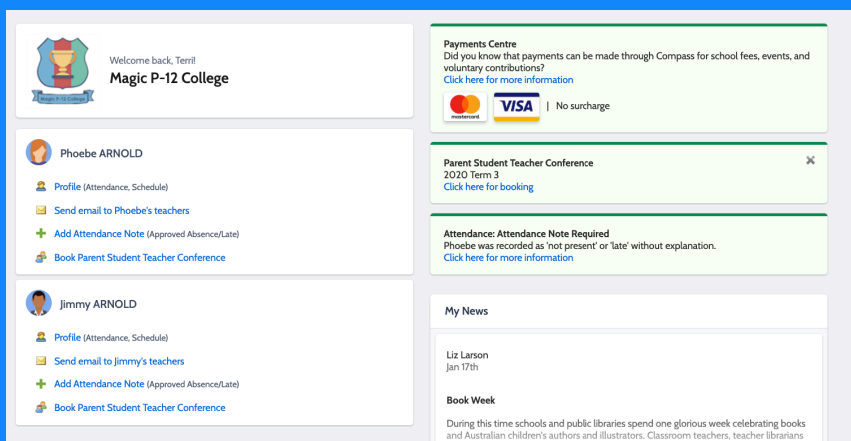
School Fees & Contributions Parent Guide

A step by step guide to take you through paying your school contributions through the Compass Portal.



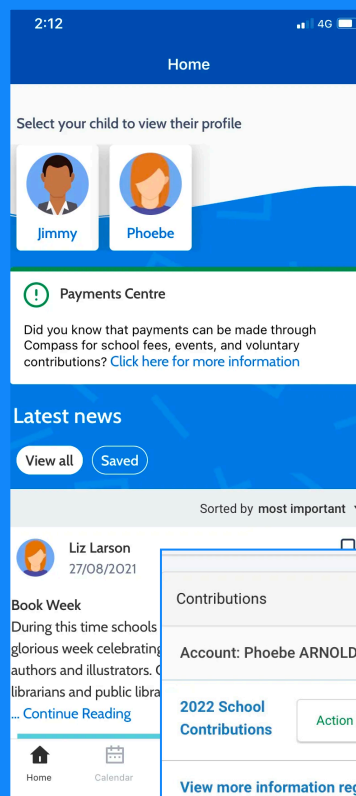
Web Browser

Click the 'Payment Centre' Banner from your Home Page to access your Contributions.



Compass App

Select Payments Centre from your Home Page.

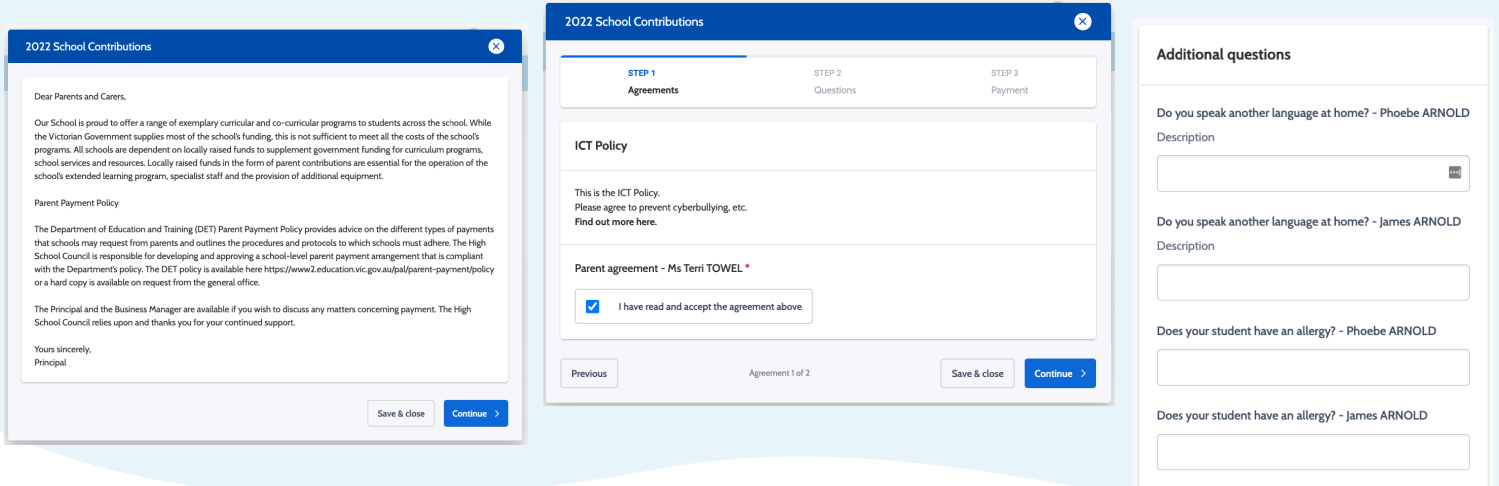




1. Description, Agreements & Questions

The first thing you'll see is your school's customised description, detailing information about contributions.

Clicking through, you may be prompted to fill out any Agreements & Questions that are relevant to your student and their enrolment.



2022 School Contributions

Dear Parents and Carers,

Our School is proud to offer a range of exemplary curricular and co-curricular programs to students across the school. While the Victorian Government supplies most of the schools funding, this is not sufficient to meet all the costs of the schools programs. All schools are dependent on locally raised funds to supplement government funding for curriculum programs, school services and resources. Locally raised funds in the form of parent contributions are essential for the operation of the school's extended learning program, specialist staff and the provision of additional equipment.

Parent Payment Policy

The Department of Education and Training (DET) Parent Payment Policy provides advice on the different types of payments that schools may request from parents and outlines the procedures and protocols to which schools must adhere. The High School Council is responsible for developing and approving a school-level parent payment arrangement that is compliant with the Department's policy. The DET policy is available here <https://www2.education.vic.gov.au/pal/parent-payment/policy> or a hard copy is available on request from the general office.

The Principal and the Business Manager are available if you wish to discuss any matters concerning payment. The High School Council relies upon and thanks you for your continued support.

Yours sincerely,
Principal

2022 School Contributions

STEP 1 Agreements STEP 2 Questions STEP 3 Payment

ICT Policy

This is the ICT Policy. Please agree to prevent cyberbullying, etc. Find out more here.

Parent agreement - Ms Terri TOWEL *

I have read and accept the agreement above

Previous Agreement 1 of 2 Save & close Continue >

Additional questions

Do you speak another language at home? - Phoebe ARNOLD

Description

Do you speak another language at home? - James ARNOLD

Description

Does your student have an allergy? - Phoebe ARNOLD

Description

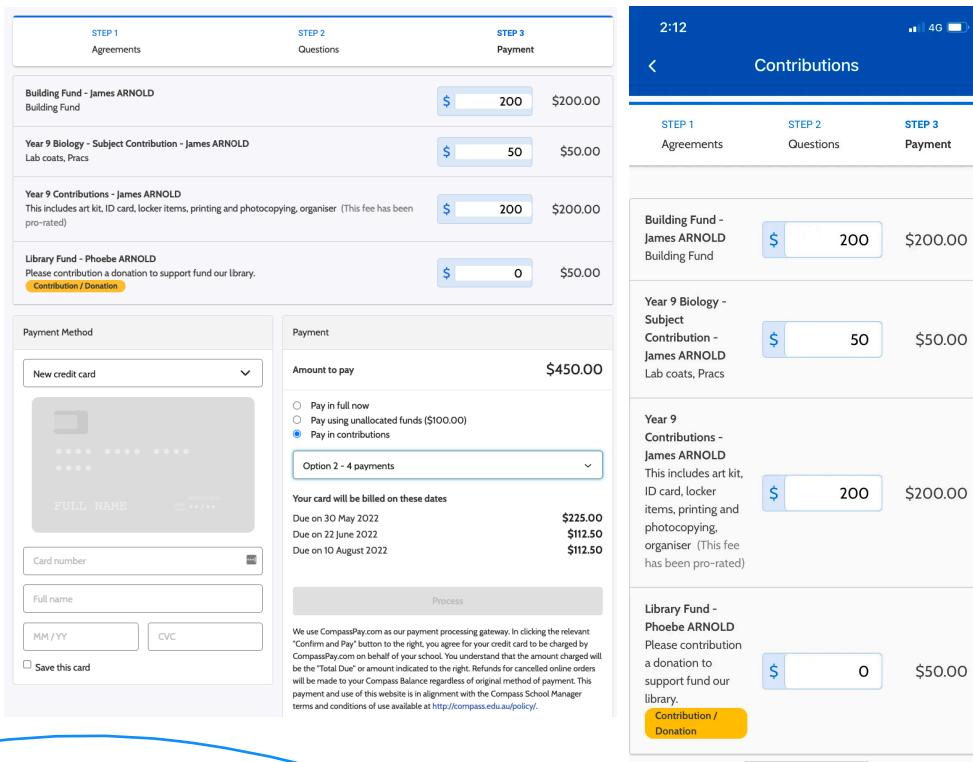
Does your student have an allergy? - James ARNOLD

Description

2. Paying your Contributions

Next, you'll see the contributions your school has posted against your student/s.

From here, you may have a few different items to choose from, broken down by student and fee type. As each item is voluntary, you can choose the amount you'd like to pay today. Next time you access your Contributions, the amounts available to pay will have decreased.



STEP 1 Agreements STEP 2 Questions STEP 3 Payment

Item	Amount	Total
Building Fund - James ARNOLD Building Fund	\$ 200	\$200.00
Year 9 Biology - Subject Contribution - James ARNOLD Lab coats, Pracs	\$ 50	\$50.00
Year 9 Contributions - James ARNOLD This includes art kit, ID card, locker items, printing and photocopying, organiser (This fee has been pro-rated)	\$ 200	\$200.00
Library Fund - Phoebe ARNOLD Please contribution a donation to support fund our library. Contribution / Donation	\$ 0	\$50.00

Payment Method

New credit card

Payment

Amount to pay **\$450.00**

Pay in full now
 Pay using unallocated funds (\$100.00)
 Pay in contributions

Option 2 - 4 payments

Your card will be billed on these dates

Due on 30 May 2022	\$225.00
Due on 22 June 2022	\$112.50
Due on 10 August 2022	\$112.50

Process

We use CompassPay.com as our payment processing gateway. In clicking the relevant "Confirm and Pay" button to the right, you agree for your credit card to be charged by CompassPay.com on behalf of your school. You understand that the amount charged will be the "Total Due" or amount indicated to the right. Refunds for cancelled online orders will be made to your Compass Balance regardless of original method of payment. This payment and use of this website is in alignment with the Compass School Manager terms and conditions of use available at <http://compass.edu.au/policy/>.

Contributions

STEP 1 Agreements STEP 2 Questions STEP 3 Payment

Building Fund - James ARNOLD Building Fund	\$ 200	\$200.00
Year 9 Biology - Subject Contribution - James ARNOLD Lab coats, Pracs	\$ 50	\$50.00
Year 9 Contributions - James ARNOLD This includes art kit, ID card, locker items, printing and photocopying, organiser (This fee has been pro-rated)	\$ 200	\$200.00
Library Fund - Phoebe ARNOLD Please contribution a donation to support fund our library. Contribution / Donation	\$ 0	\$50.00

Payment Options

1. Credit Card/Saved Card

Just like an Event, pay the chosen amount in one go.

2. Payment Plan

Choose from your school's preset options to setup a direct debit.

3. Credits/Unallocated Funds

If you see this option, your school has applied a credit against your account.

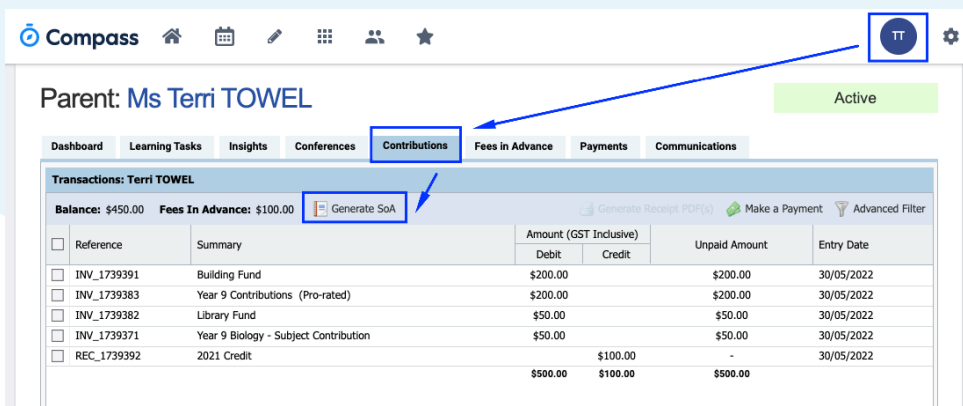
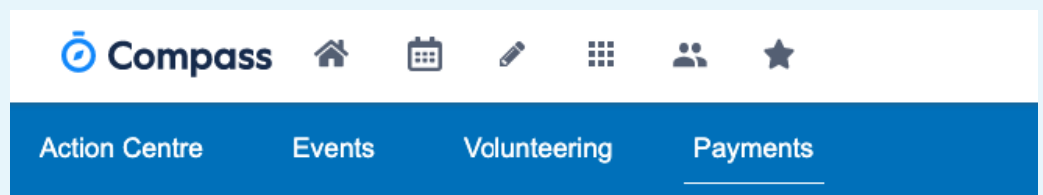
The amount you're choosing to pay here will need to equal the credit amount.

3. Accessing your Payment History

Each time you make a payment through Compass, you'll receive a receipt straight to your email address.

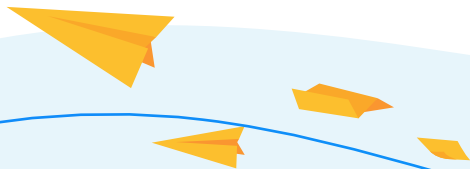
Within the portal, you can also access your **Payment History** through **Payments Centre**.

To generate a **Statement of Account PDF**, simply navigate to your parent account via your initials in the top right, and select the Contributions tab. From here, generate your SoA.



Handy Tips & Tricks

- ✓ **Chip away at your Contributions as you please!**
You can access your Compass App at anytime to see what's been paid, and choose to pay more if required.
- ✓ **Keep all your Events and Contributions in one spot.**
No need to jump between multiple programs and paper forms - it's all in Compass!
- ✓ **Manage your own Payment History in-app, without having to call up the Admin Office!**
Automated emails and downloadable statements make it even easier to know what's been paid.



REFUND POLICY

Parent requests for refunds are subject to the discretion of the school and made on a case-by-case basis.

Refunds will be provided where the school deems it is reasonable and fair to do so, taking into consideration whether a cost has been incurred. This applies in all circumstances including illness with a medical certificate.

Any refund requests must be made in writing.

Advice regarding refunds will be provided once all suppliers have been paid and reconciliations have been completed. Please note that this could take approximately 30 days.

Approval and review

Beaumaris Secondary College Council has approved this policy and will review the policy in line with any future changes to Government policy and Beaumaris College objectives annually.

REVIEW CYCLE

This policy was last approved by school council in April 2024 and is scheduled for review in April 2025.

PARENT PAYMENTS POLICY

ONE PAGE OVERVIEW



FREE INSTRUCTION

- Schools provide students with free instruction and ensure students have free access to all items, activities and services that are used by the school to fulfil the requirements of the Curriculum. This includes the Victorian Curriculum F-10, the Victorian Certificate of Education (VCE) including the VCE Vocational Major and the Victorian Pathways Certificate.
- Schools may invite parents to make a financial contribution to support the school.



PARENT PAYMENT REQUESTS

Schools can request contributions from parents under three categories:

Curriculum Contributions

Voluntary financial contributions for curriculum items and activities which the school deems necessary for students to learn the Curriculum.

Other Contributions

Voluntary financial contributions for non-curriculum items and activities that relate to the school's functions and objectives.

Extra-Curricular Items and Activities

Items and activities that enhance or broaden the schooling experience of students and are above and beyond what the school provides for free to deliver the Curriculum. These are provided on a user-pays basis.

- Schools may also invite parents to supply or purchase educational items to use and own (e.g. textbooks, stationery, digital devices).



FINANCIAL HELP FOR FAMILIES

- Schools put in place financial hardship arrangements to support families who cannot pay for items or activities so that their child doesn't miss out.
- Schools have a nominated parent payment contact person(s) that parents can have a confidential discussion with regarding financial hardship arrangements.



SCHOOL PROCESSES

- Schools must obtain school council approval for their parent payment arrangements and publish all requests and communications for each year level on their school website for transparency.

Belong • Believe • Become



117/136 Reserve Road, Beaumaris VIC 3193

 03 8569 9200

 beaumaris.sc@education.vic.gov.au

 www.beaumarissc.vic.edu.au