



Beaumaris Secondary College

**Year 9 & 10 2025
Parent Payments**

Dear Parents/Guardians,

We are looking forward to a great year of teaching and learning at Beaumaris Secondary College and would like to advise you of the college's voluntary financial contributions for 2025.

Schools provide students with free instruction to fulfil the standard Victorian curriculum requirements and we want to assure you that all contributions are voluntary. Nevertheless, the ongoing support of our families ensures that our school can offer the best possible education and support for our students.

Beaumaris Secondary College and School Council make every effort to keep the cost of items and activities to a minimum and affordable for all parents, by reviewing costs on an annual basis.

The monumental financial support from our parents has allowed us to build/install/purchase:

- Equipment to run a wide range of specialism subjects and curriculum experiences
- Micro-credentials week activities
- Curtains and lighting bar installation for Theatre Studies
- Geography weather metres for Environmental Studies
- Photography equipment for Create
- Sustainable food composter for Food Technology
- Digital Blood pressure monitors for BEST
- ECG sensor for BEST
- Class Set of Gel Electrophoresis Machines for BEST
- Student Leaders Conference to develop leadership skills
- Music scores and equipment
- Year 11 Big Day Out to promote year level connections
- Service our aquarium in BEST allowing students to study the ecosystem in real time
- Build a sanctuary for our stick insects allowing students to study them in their natural environment as well as feed/care for them
- BEST machine sets demonstrating directional force and mechanical advantage
- Portable PA system for school concerts and soirees

For further information on the Department's Parent Payments Policy, please refer to the one-page document at the end of this booklet.

Yours sincerely,



Debby Chaves
Principal



Steve Pearce
School Council President

Curriculum Contributions – items and activities that students use, or participate in, to access the Curriculum	Amount	
<u>Year 9/10 subject consumables, classroom materials and activities</u>	<u>Amount</u>	
A Love of Language – Printing and photocopying	\$NIL	
Art and Soul – Specialist art supplies; canvas paper and card, markers, oil pastels, charcoal, clay, glazes, inks and prisma color pencils	\$70.00	
Artisanship – Materials including timber, acrylic, argenteum silver solder, glue, resin, hinges, sandpaper, drill bits, silicone molding, oil, stain, varnish and lacquer etc	\$160.00	
Back to the Future – PBL materials; electronic components, batteries and motors	\$30.00	
Be a Film-maker – Storyboard printing and scripts	\$ 5.00	
Be a Vet – Dissection materials	\$20.00	
Be an Author – Printing and photocopying	\$NIL	
Beaumaris Sport Enhancement – <i>Pay as you go, \$250 per term</i>	\$NIL	
Beyond (Year 9) – Materials for product development and Market Day	\$10.00	
Beyond (Year 10) – Printing and photocopying	\$NIL	
Chemistry in the Kitchen – Cooking materials and equipment upkeep	\$80.00	
Coding – Game Development – Game development purchases; 3D models, pre-made code and sound effects	\$20.00	
CSI: Crime Scene Investigation – PBL materials; playdough brains, blood sample kits and chromosome modelling	\$20.00	\$
Cultural Lens – Printing and photocopying	\$NIL	
Designing for Tomorrow – Inks, markers, cartridge paper, drafting film/foam and presentation boards	\$55.00	
DNA to Dinosaurs – Resource materials for practical activities, experiments and investigations	\$15.00	
Don't Stop the Music – Printing and photocopying	\$NIL	
Drama – PBL materials; script excerpts, focused text for performance work, stimulus materials and production role workshop materials	\$45.00	
Events that Changed the World – PBL materials	\$ 5.00	
Fab Fabrics – API access, learning tools and materials	\$25.00	
Film as Text – Printing and photocopying	\$NIL	
Fit for Life – First aid kit, poster paper and art supplies for PBLs	\$18.00	
Freedom & Democracy – PBL materials	\$10.00	
Game Set Match – Whistles, coaching equipment, poster paper and art supplies for PBLs	\$15.00	
GOAL (Year 9/10) – Resource materials for termly based activities	\$ 8.00	
Good & Evil – Printing and photocopying	\$NIL	
Greatest Novels of All Time – Printing and photocopying	\$NIL	

Green Chemistry – Chemicals and equipment for scientific inquiries and PBL outcomes	\$30.00
High Abilities Wider Knowledge (HAWK Program) – Problem solving program and research materials	\$20.00
Hopes and Horrors of Humanity – Printing and photocopying	\$NIL
Horrible Histories – Printing and photocopying	\$NIL
Introduction to Differential Calculus – PBL resources and rechargeable batteries	\$ 5.00
Introduction to Integral Calculus – Printing and photocopying	\$NIL
Inventions and Discoveries – Fabrication supplies; timber, acrylic, glue, 3D printing filament and supplies. Mechanical components; wheels, gears and gearboxes. Electrical components; micro controllers, sensors, motors and motor controllers	\$130.00
Languages French (Year 9) – French cooking and PBL materials	\$15.00
Languages French (Year 10) – Resource materials	\$ 5.00
Languages Japanese (Year 9) – Japanese cooking and PBL materials	\$15.00
Languages Japanese (Year 10) – Japanese cooking and PBL materials	\$11.00
Legends of Literature – Printing and photocopying	\$NIL
Life Through the Lens – Light sensitive paper, collage materials, prints, photo paper, printing ink and acetate plastic for negative prints	\$20.00
Making the Musician – Program booklet, instrument equipment hire and maintenance	\$30.00
Marine Sanctuary – Resource materials for practical activities, experiments and investigations	\$10.00
Mathematics (Year 9) – Resource materials	\$ 2.00
Mathematics (Year 10) – Resource materials	\$ 2.00
Maths Pathways – Resource materials	\$10.00
Money & Markets – PBL materials	\$ 5.00
Music Studio – Sound trap licenses, songbooks and instrumental hire – MIDI keyboards, guitars, amps and microphones	\$40.00
Novel into Film – Printing and photocopying	\$NIL
Poverty & Power – Resource materials	\$ 5.00
Snapshot – Photography printing, upkeep of cameras and equipment	\$10.00
Sustainable Development – Resource materials	\$ 5.00
Sustainable Food Solutions – Equipment upkeep, cooking and sustainable products	\$225.00
The Big Bang – PBL materials; rubber bands, string, foil, paper, tape, plastic utensils and hot glue	\$20.00
The Body Lab – Resource materials	\$10.00
The Great Outdoors – Printing and photocopying	\$NIL

The Hero's Journey – Printing and photocopying	\$NIL	
The Stories of Us – Printing and photocopying	\$NIL	
Visual Communication – Markers, watercolor pencils, paper, mountboard and presentation board	\$50.00	
You Are What You Eat – Cooking materials and equipment upkeep	\$250.00	
Student Resources		\$15.00
<ul style="list-style-type: none"> Year 9 Student ID Card (\$5) and Locker Maintenance (\$10) 		
Digital Technologies – provision of devices, software and system support		\$135.00
<ul style="list-style-type: none"> Compass Access (\$40), Library Systems (\$5), IT Security & Support (\$90) 		
Year 9/10 printing and photocopying of worksheets and learning materials		\$65.00
Total Curriculum Contributions based on Specialism choices		\$

Other Contributions – for non-curriculum items and activities	Amount
Curriculum Innovate	\$200.00
First Aid Equipment	\$10.00
State Schools' Relief	\$50.00
Total Other Contributions	\$260.00

Tax deductible contributions (suggested amount) <i>Suggested amount parents to complete in Compass portal</i>	Amount
Building Fund. A tax-deductible contribution to support renovations, upgrades and maintenance of school infrastructure.	\$50.00
Library Fund. A tax-deductible contribution to support book purchases and other equipment that sustain the library as a valuable resource.	\$50.00
Total Tax-deductible Contributions	\$100.00
Total Curriculum and Other Contributions	\$

Education items for students to own

Booklists: Families will receive a separate booklist of items that the school recommends you purchase from Beaumaris Books or the Sustainable School Shop for your child to individually own and use.

<https://beaumarissc.vic.edu.au/enrolments-tours/booklists-stationery>

BYOD: Beaumaris Secondary College is a BYOD school. Students are requested to purchase a device that meets the criteria listed on the BSC website.

<https://beaumarissc.vic.edu.au/enrolments-tours/byod-program>

Extra-Curricular Items and Activities – provided on a user-pays basis

Beaumaris Secondary College offers a range of optional items and activities that enhance or broaden the schooling experience of students and are above and beyond what the school provides to deliver the curriculum.

The cost of extra-curricular items and activities will be advised throughout the year.

Indicative Extra-Curricular Items and Activities	Indicative Amount
Athletics Carnival	\$20.00
Swimming Carnival	\$20.00
2025 Year 9 Camp Program – Choose your own adventure	\$TBA
2025 Year 10 Ski Camp	\$950.00
Art and Soul – Excursion	\$60.00
Back to the Future – Bushranger Excursion	\$35.00
Back to the Future – Road Start Incursion	\$30.00
Be a Vet – Melbourne Zoo Excursion	\$80.00
Be a Vet – Myuna Farm Excursion	\$80.00
Be an Author – Author Incursion	\$30.00
Beaumaris Sport Enhancement – Coaching/BASE training sessions run by external provider – payment approx. \$250.00 per term	\$1000.00
CSI: Crime Scene Investigation – Incursion	\$25.00
Cultural Lens – Immigration Museum Incursion	\$40.00
Designing for Tomorrow – Excursion	\$40.00
DNA to Dinosaurs – Bioeyes Incursion	\$20.00
DNA to Dinosaurs – Fossils of Bayside Incursion	\$30.00
DNA to Dinosaurs – Museum Excursion	\$30.00
Drama – Live Theatre Performance	\$70.00
Events that Changed the World – Shrine of Remembrance Excursion	\$26.00
Fit for Life – Cable Park Excursion	\$60.00
Fit for Life – High Ropes Course Excursion	\$60.00
Game Set Match – Bowling Excursion	\$10.00
Game Set Match – Tennis Excursion	\$5.00
GOAL (Year 9/10) – Wellbeing Days	\$60.00
HAWK Program – Termly Excursions	\$95.00
Hopes and Horrors of Humanity – Jewish Holocaust Museum Excursion	\$35.00
Horrible Histories – Holocaust Museum Excursion	\$36.00
Languages French (Year 9) – French Bakery Excursion	\$45.00
Languages French (Year 10) – French Film Festival Excursion	\$45.00
Languages Japanese (Year 9/10) – City Excursion	\$35.00

Life Through the Lens – City Excursion	\$30.00
Making the Musician – Concert Excursion	\$40.00
Marine Sanctuary – Portsea Excursion	\$170.00
Marine Sanctuary – Ricketts Point Fieldtrips x2	\$50.00
Marine Sanctuary – Ricketts Point Snorkelling Excursions	\$170.00
Music Studio – Music Concert Excursion	\$30.00
Poverty & Power – Incursion	\$10.00
Snapshot – City Excursion	\$30.00
Sustainable Development – Coastal Fieldtrip	\$40.00
The Big Bang – Australian Synchrotron Excursion	\$50.00
The Great Outdoors – Outdoor Camps x2	\$600.00
The Great Outdoors – Day Excursions	\$300.00

Total Extra-curricular Items and Activities totals are based on Specialism choices

Instrumental Music Program & VSL Studies

Instrumental Music Program – Refer to website for Instrumental Music Handbook	\$Price on enquiry
VSL Studies – Enrolment Contribution to the Victorian School of Languages	\$TBA

Category	Total Amount
Curriculum Contributions based on Specialism choices	\$
Other Contributions	\$260.00
Tax-deductible Contributions	\$100.00
Total	\$

Pay as you go – Extra-curricular Items and Activities
To be paid via Compass throughout the year

Payment Options

Payment options available commencing **3 February 2025**:

- In full
- 5 monthly instalments
- 10 fortnightly instalments

The college will be utilising the Compass Billing module for payments, instructions can be found on the following pages.

If you do not wish to use Compass, please contact the office on 03 8569 9200 to discuss alternative payment options.

Financial Support for Families

Beaumaris Secondary College understands that some families may experience financial difficulty and offers a range of support options, including:

- The Camps, Sports and Excursions Fund (CSEF)
- State Schools' Relief (SSR)
- Payment plans for extra-curricular items and activities

For a confidential discussion about accessing these services, or if you would like to discuss alternative payment arrangements, contact:

Justine MacDonald, Business Manager

Ph: 03 8569 9200 | Email: justine.macdonald@education.vic.gov.au



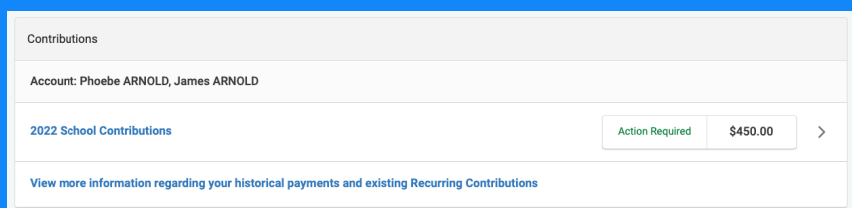
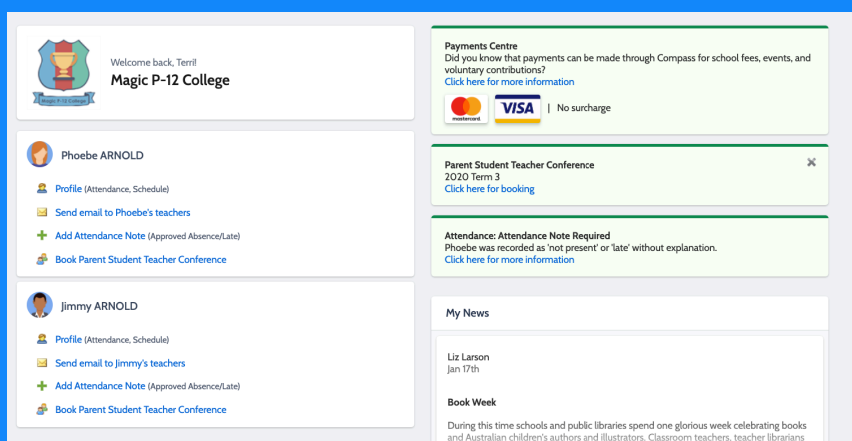
School Fees & Contributions Parent Guide

A step by step guide to take you through paying your school contributions through the Compass Portal.



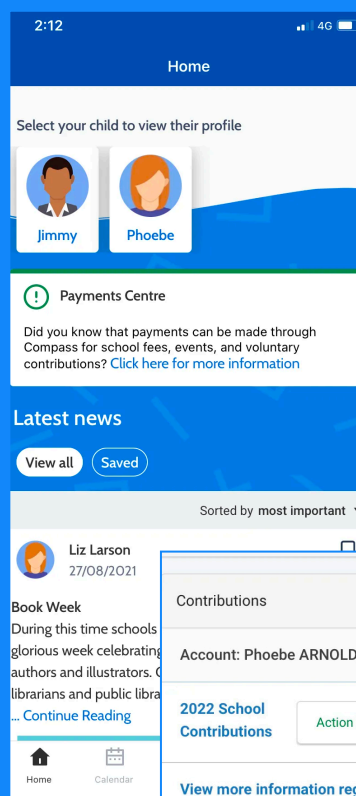
Web Browser

Click the 'Payment Centre' Banner from your Home Page to access your Contributions.



Compass App

Select Payments Centre from your Home Page.

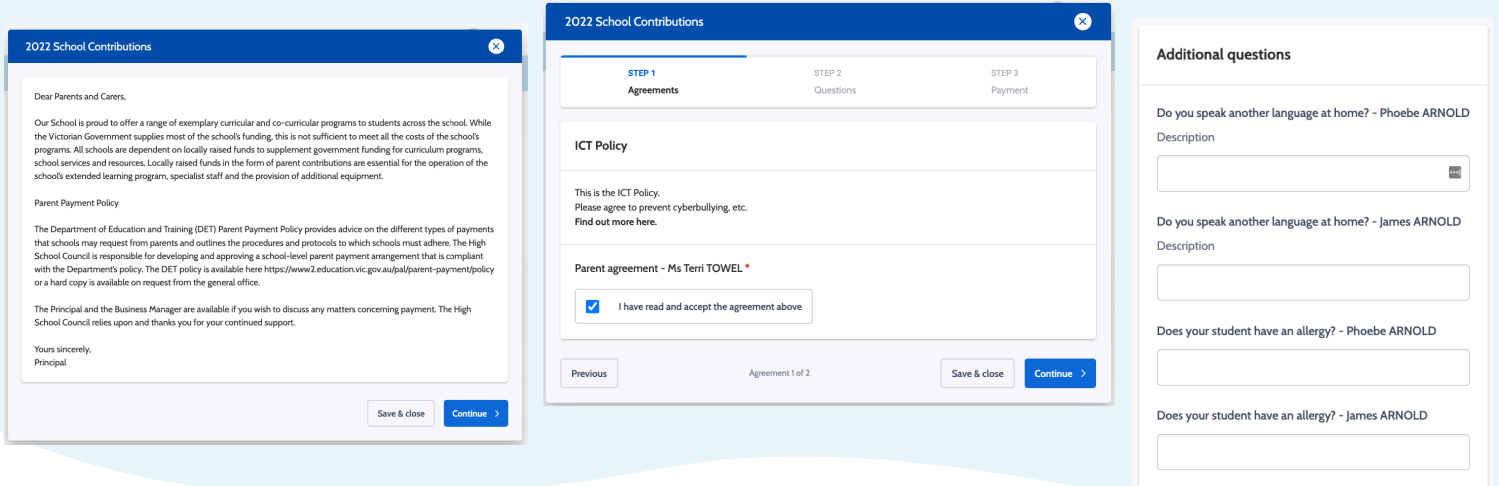




1. Description, Agreements & Questions

The first thing you'll see is your school's customised description, detailing information about contributions.

Clicking through, you may be prompted to fill out any Agreements & Questions that are relevant to your student and their enrolment.



2022 School Contributions

Dear Parents and Carers,

Our School is proud to offer a range of exemplary curricular and co-curricular programs to students across the school. While the Victorian Government supplies most of the schools funding, this is not sufficient to meet all the costs of the schools programs. All schools are dependent on locally raised funds to supplement government funding for curriculum programs, school services and resources. Locally raised funds in the form of parent contributions are essential for the operation of the school's extended learning program, specialist staff and the provision of additional equipment.

Parent Payment Policy

The Department of Education and Training (DET) Parent Payment Policy provides advice on the different types of payments that schools may request from parents and outlines the procedures and protocols to which schools must adhere. The High School Council is responsible for developing and approving a school-level parent payment arrangement that is compliant with the Department's policy. The DET policy is available here <https://www2.education.vic.gov.au/pal/parent-payment/policy> or a hard copy is available on request from the general office.

The Principal and the Business Manager are available if you wish to discuss any matters concerning payment. The High School Council relies upon and thanks you for your continued support.

Yours sincerely,
Principal

2022 School Contributions

STEP 1 Agreements STEP 2 Questions STEP 3 Payment

ICT Policy

This is the ICT Policy. Please agree to prevent cyberbullying, etc. [Find out more here.](#)

Parent agreement - Ms Terri TOWEL *

I have read and accept the agreement above

Previous Agreement 1 of 2 Save & close Continue >

Additional questions

Do you speak another language at home? - Phoebe ARNOLD
Description

Do you speak another language at home? - James ARNOLD
Description

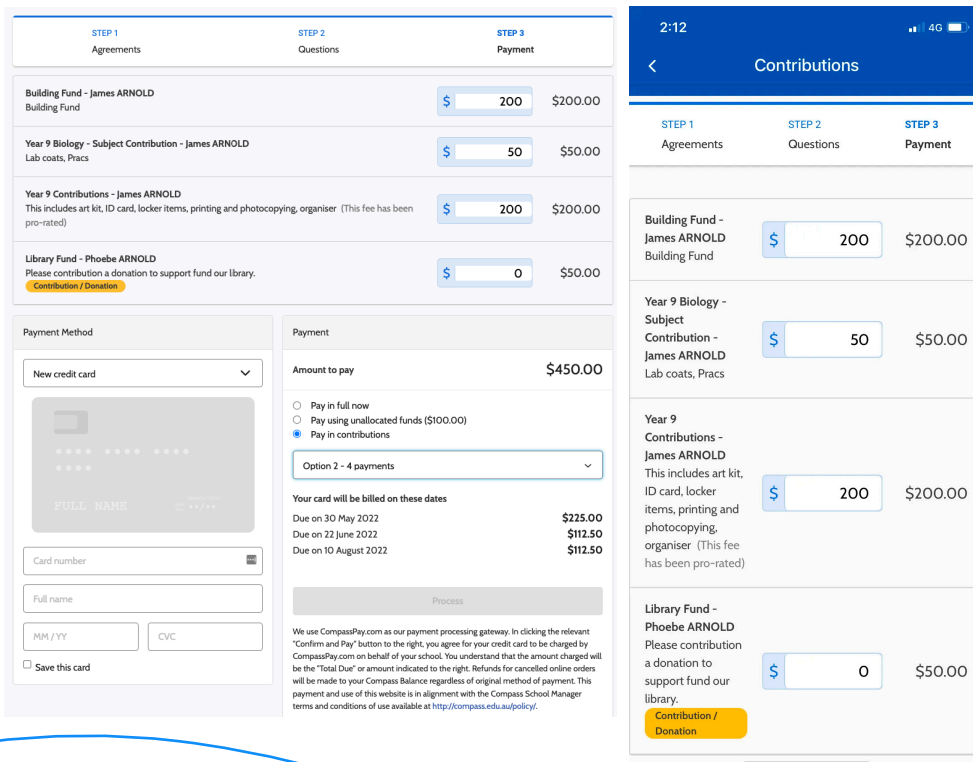
Does your student have an allergy? - Phoebe ARNOLD
Description

Does your student have an allergy? - James ARNOLD
Description

2. Paying your Contributions

Next, you'll see the contributions your school has posted against your student/s.

From here, you may have a few different items to choose from, broken down by student and fee type. As each item is voluntary, you can choose the amount you'd like to pay today. Next time you access your Contributions, the amounts available to pay will have decreased.



STEP 1 Agreements STEP 2 Questions STEP 3 Payment

Item	Amount	Total
Building Fund - James ARNOLD Building Fund	\$ 200	\$200.00
Year 9 Biology - Subject Contribution - James ARNOLD Lab coats, Pracs	\$ 50	\$50.00
Year 9 Contributions - James ARNOLD This includes art kit, ID card, locker items, printing and photocopying, organiser (This fee has been pro-rated)	\$ 200	\$200.00
Library Fund - Phoebe ARNOLD Please contribution a donation to support fund our library. Contribution / Donation	\$ 0	\$50.00

Payment Method

New credit card

Payment

Amount to pay **\$450.00**

Pay in full now
 Pay using unallocated funds (\$100.00)
 Pay in contributions

Option 2 - 4 payments

Your card will be billed on these dates

Due on 30 May 2022	\$225.00
Due on 22 June 2022	\$112.50
Due on 10 August 2022	\$112.50

Process

We use CompassPay.com as our payment processing gateway. In clicking the relevant "Confirm and Pay" button to the right, you agree for your credit card to be charged by CompassPay.com on behalf of your school. You understand that the amount charged will be the "Total Due" or amount indicated to the right. Refunds for cancelled online orders will be made to your Compass Balance regardless of original method of payment. This payment and use of this website is in alignment with the Compass School Manager terms and conditions of use available at <http://compass.edu.au/policy/>.

Contributions

STEP 1 Agreements STEP 2 Questions STEP 3 Payment

Building Fund - James ARNOLD Building Fund	\$ 200	\$200.00
Year 9 Biology - Subject Contribution - James ARNOLD Lab coats, Pracs	\$ 50	\$50.00
Year 9 Contributions - James ARNOLD This includes art kit, ID card, locker items, printing and photocopying, organiser (This fee has been pro-rated)	\$ 200	\$200.00
Library Fund - Phoebe ARNOLD Please contribution a donation to support fund our library. Contribution / Donation	\$ 0	\$50.00

Payment Options

1. Credit Card/Saved Card

Just like an Event, pay the chosen amount in one go.

2. Payment Plan

Choose from your school's preset options to setup a direct debit.

3. Credits/Unallocated Funds

If you see this option, your school has applied a credit against your account.

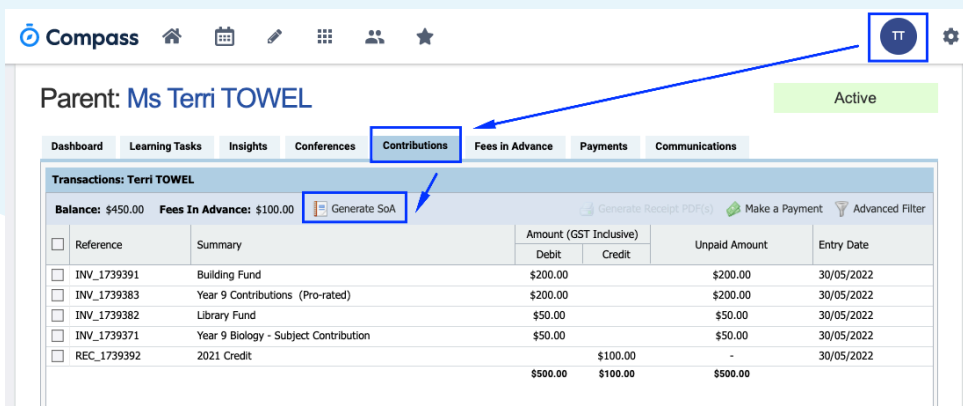
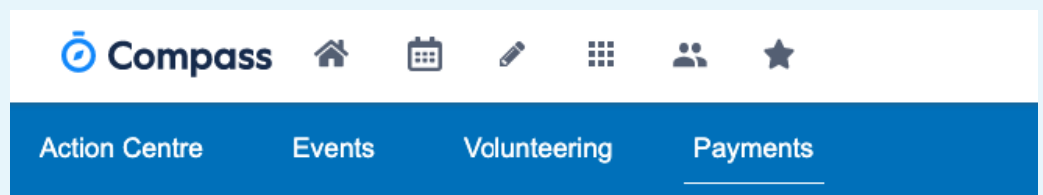
The amount you're choosing to pay here will need to equal the credit amount.

3. Accessing your Payment History

Each time you make a payment through Compass, you'll receive a receipt straight to your email address.

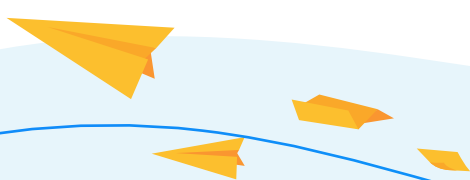
Within the portal, you can also access your **Payment History** through **Payments Centre**.

To generate a **Statement of Account PDF**, simply navigate to your parent account via your initials in the top right, and select the **Contributions** tab. From here, generate your SoA.



Handy Tips & Tricks

- ✓ **Chip away at your Contributions as you please!**
 You can access your Compass App at anytime to see what's been paid, and choose to pay more if required.
- ✓ **Keep all your Events and Contributions in one spot.**
 No need to jump between multiple programs and paper forms - it's all in Compass!
- ✓ **Manage your own Payment History in-app, without having to call up the Admin Office!**
 Automated emails and downloadable statements make it even easier to know what's been paid.



REFUND POLICY

Parent requests for refunds are subject to the discretion of the school and made on a case-by-case basis.

Refunds will be provided where the school deems it is reasonable and fair to do so, taking into consideration whether a cost has been incurred. This applies in all circumstances including illness with a medical certificate.

Any refund requests must be made in writing.

Advice regarding refunds will be provided once all suppliers have been paid and reconciliations have been completed. Please note that this could take approximately 30 days.

Approval and review

Beaumaris Secondary College Council has approved this policy and will review the policy in line with any future changes to Government policy and Beaumaris College objectives annually.

REVIEW CYCLE

This policy was last approved by school council in April 2024 and is scheduled for review in April 2025.

PARENT PAYMENTS POLICY

ONE PAGE OVERVIEW



FREE INSTRUCTION

- Schools provide students with free instruction and ensure students have free access to all items, activities and services that are used by the school to fulfil the requirements of the Curriculum. This includes the Victorian Curriculum F-10, the Victorian Certificate of Education (VCE) including the VCE Vocational Major and the Victorian Pathways Certificate.
- Schools may invite parents to make a financial contribution to support the school.



PARENT PAYMENT REQUESTS

Schools can request contributions from parents under three categories:

Curriculum Contributions

Voluntary financial contributions for curriculum items and activities which the school deems necessary for students to learn the Curriculum.

Other Contributions

Voluntary financial contributions for non-curriculum items and activities that relate to the school's functions and objectives.

Extra-Curricular Items and Activities

Items and activities that enhance or broaden the schooling experience of students and are above and beyond what the school provides for free to deliver the Curriculum. These are provided on a user-pays basis.

- Schools may also invite parents to supply or purchase educational items to use and own (e.g. textbooks, stationery, digital devices).



FINANCIAL HELP FOR FAMILIES

- Schools put in place financial hardship arrangements to support families who cannot pay for items or activities so that their child doesn't miss out.
- Schools have a nominated parent payment contact person(s) that parents can have a confidential discussion with regarding financial hardship arrangements.



SCHOOL PROCESSES

- Schools must obtain school council approval for their parent payment arrangements and publish all requests and communications for each year level on their school website for transparency.

Belong • Believe • Become



117/136 Reserve Road, Beaumaris VIC 3193

 03 8569 9200

 beaumaris.sc@education.vic.gov.au

 www.beaumarissc.vic.edu.au